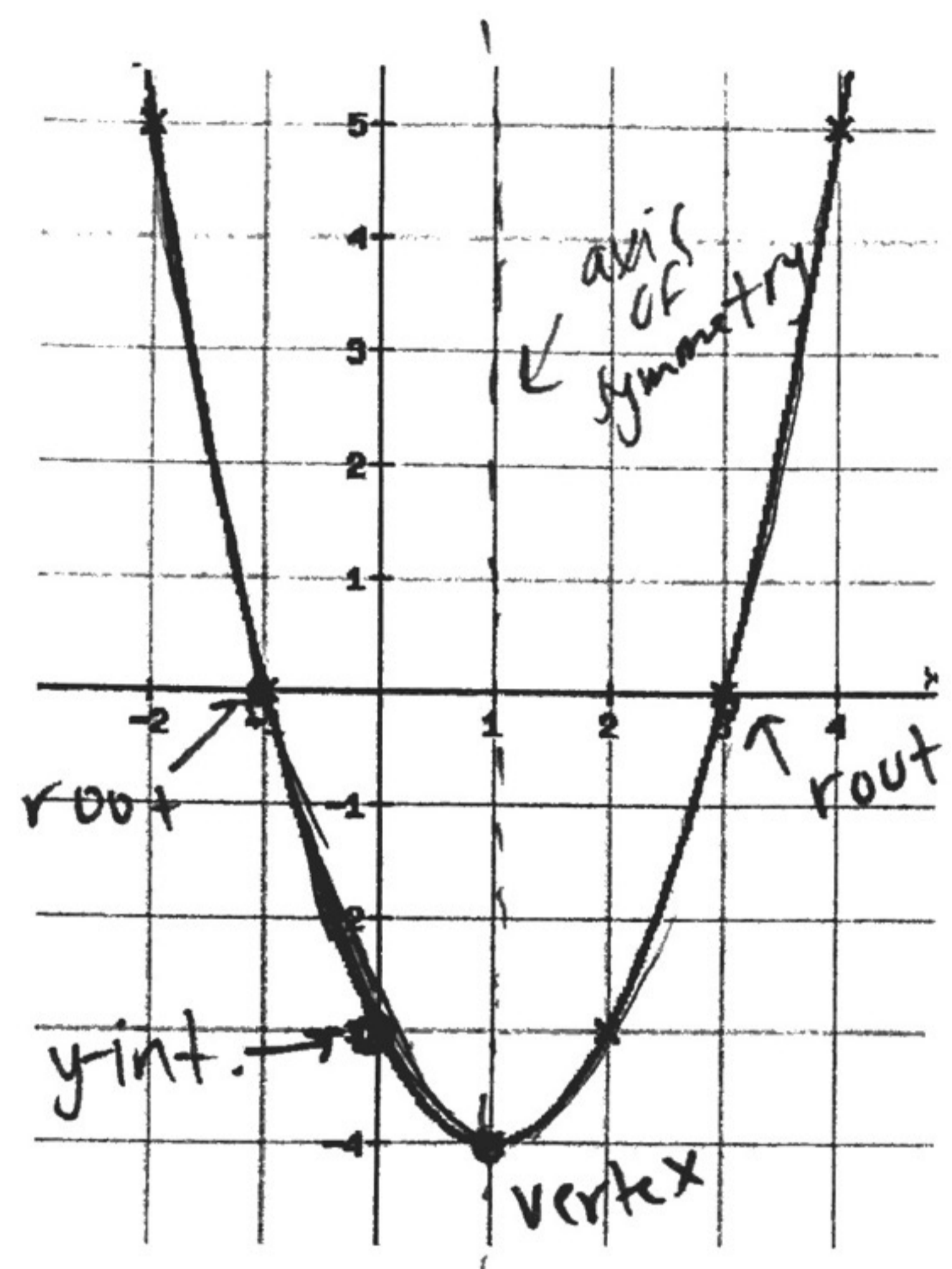


### Parts of a Quadratic Graph



Vertex: highest or lowest points  $(1, -4)$

Y - intercept: when  $x=0$ ; intercepting the y-axis  $(0, -3)$

Roots: x-intercepts; when  $y=0$   
 $(-1, 0)$        $(3, 0)$

Positive or Negative Function?  
POSITIVE

Axis of Symmetry:  
line that intersects the vertex, cuts the parabola in half  $x=1$

Increasing Intervals:  $x > 1$

Decreasing interval:  $x < 1$